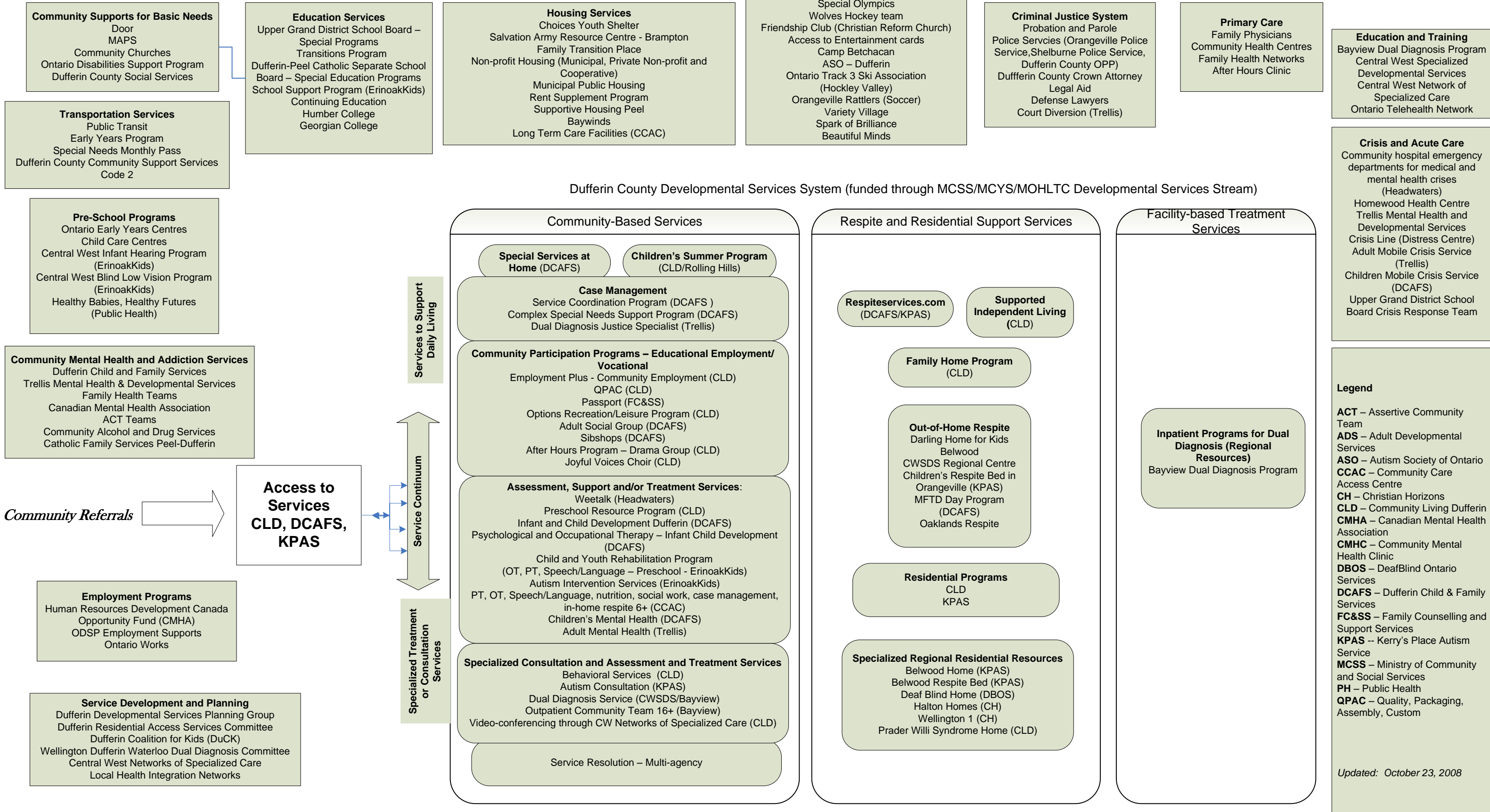


Services in Dufferin County to Support People with Developmental Disabilities - Health, Education and Social Services



Special Services at Home
(DCAFS)
Ages: all ages
T: (519) 941-1530
W: www.dcafs.on.ca

Children's Summer Program
(CLD)
Ages: 4-14
T: (519) 941-8971
W:
www.communitylivingdufferin.ca

Service Coordination Program
(DCAFS)
Ages: all ages
T: (519) 941-1530
W: www.dcafs.on.ca

Complex Special Needs
Support Program
(DCAFS)
Ages: under 18
T: (519) 941-1530
W: www.dcafs.on.ca

Dual Diagnosis Justice
Specialist (Trellis)
Ages: 16+
Contact: Jennifer Gleeson
T: (519) 821-2060 ext. 296

Employment Plus
(CLD)
Ages: 18+
T: (519) 941-8971
W:
www.communitylivingdufferin.ca

QPAC
(CLD)
Ages: 18+
T: (519) 941-8971
W:
www.communitylivingdufferin.ca

Passport
(FC&SS)
Ages: 18+
Contact: Diane Figura
T: (519) 824-2431

Options Recreation/Leisure
Program (CLD)
Ages: 18+
T: (519) 941-8971
W:
www.communitylivingdufferin.ca

Adult Social Group
(CLD & DCAFS)
Ages: 18+
T: (519) 941-1530
W: www.dcafs.on.ca

Sibshops
(DCAFS)
Ages: under 18
T: (519) 941-1530
W: www.dcafs.on.ca

After Hours Program – Drama
Group (CLD)
Ages: 18+
T: (519) 941-8971
W:
www.communitylivingdufferin.ca

Joyful Voices Choir
(CLD)
Ages: 18+
T: (519) 941-8971
W:
www.communitylivingdufferin.ca

Wee Talk
(Headwaters)
Ages: Preschool
T: (519) 846-2715 ext. 4676
(800) 265-7293 ext. 4676

Preschool Resource Program
(CLD)
Ages: Preschool
T: (519) 941-8971
W:
www.communitylivingdufferin.ca

Infant and Child Development
Dufferin (DCAFS)
Ages: birth to 5
T: (519) 941-1530
W: www.dcafs.on.ca

Psychological and Occupational
Therapy – Infant Child
Development (DCAFS)
Ages: birth to 5
T: (519) 941-1530
W: www.dcafs.on.ca

Child and Youth Rehabilitation
Program
OT, PT, Speech/Language -
Preschool (ErinoakKids)
Ages: preschool
T: (905) 855-3557
(877) 374-6625
W: www.erinoakkids.ca

Autism Intervention Services
(ErinoakKids)
Ages: under 18
T: (905) 855-3557
(877) 374-6625
W: www.erinoakkids.ca

PT, OT, Speech/Language,
nutrition, social work, case
management, in-home respite
6+ (CCAC)
Ages: 6+
T: (905) 796-0040
(888) 733-1177

Children's Mental Health
(DCAFS)
Ages: under 18
T: (519) 941-1530
W: www.dcafs.on.ca

Adult Mental Health
(Trellis)
Ages: 18+
T: (519) 941-0465
W: www.trellis.on.ca

Behavioural Services
(CLD)
Ages: all ages
T: (519) 941-8971
W:
www.communitylivingdufferin.ca

Autism Consultation
(KPAS)
Ages: all ages
T: (519) 940-3590
W: www.kerrysplace.org

Dual Diagnosis Service
(Bayview/CWSDS)
Ages: 16+
T:
Bayview (705) 549-3181
CWSDS (905) 844-7864

Outpatient Community Team
(Bayview)
Ages: 16+
T: (705) 549-3181

Videoconferencing through CW
Networks of Specialized Care
(CLD)
T: (519) 941-8971
W:
www.communitylivingdufferin.ca

Service Resolution
Ages: all ages
Contact: Dwight Syms
T: (519) 546-5480

RespiteServices.com
(DCAFS/KPAS)
Ages: all ages
T: (519) 941-1530
W: www.dcafs.on.ca

Supported Independent Living
(CLD)
Ages: 18+
T: (519) 941-8971
W:
www.communitylivingdufferin.ca

Family Home Program
(CLD)
Ages: 18+
T: (519) 941-8971
W:
www.communitylivingdufferin.ca

Darling Home for Kids
Ages: under 18
T: (905) 878-7673
(877) 406-7673
W: www.darlinghomeforkids.ca

MFTD Day Program
(DCAFS)
Ages: under 18
T: (519) 941-1530
W: www.dcafs.on.ca

North Children's Respite Home
(KPAS)
Ages: under 18
T: (519) 941-7038 ext. 11
W: www.kerrysplace.org

Oaklands Respite Program
Ages: 6+
T: (905) 844-7864

Residential Programs
(CLD/KPAS)
Ages: 18+
T:
CLD (519) 941-1530
KPAS (519) 941-7038 ext. 11

Belwood Home
(KPAS)
Ages: 18+
T: (519) 843-6495 ext. 222
W: www.kerrysplace.org

Belwood Respite Bed
(KPAS)
Ages: 18+
T: (519) 843-6495 ext. 223
W: www.kerrysplace.org

DeafBlind Home
(DBOS)
Ages: 18+
T: (905) 853-2862
W: www.deafblindontario.ca

Halton Home
(CH)
Ages: 18+
T: (519) 650-3241

Prader Willi Home
(CLD)
Ages: 18+
T: (519) 941-8971
W:
www.communitylivingdufferin.ca

Wellington 1 Home
(CH)
Ages: 18+
T: (519) 650-3241